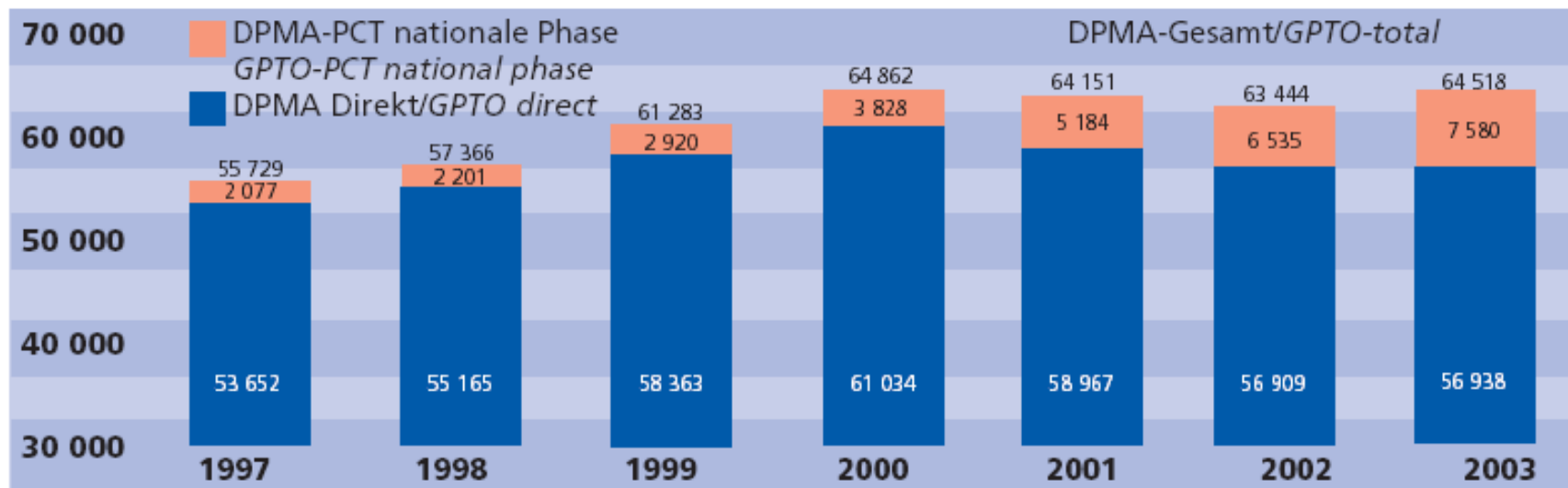


Definition für die Praxis in Patentverfahren vor DPMA, BPatG und EPA:

- Eine Erfindung im Sinne des Patentrechts ist eine Lehre zum praktischen Handeln, deren beanspruchter Gegenstand oder deren beanspruchte Tätigkeit technischer Natur, realisierbar und wiederholbar ist und die Lösung einer Aufgabe durch technische Überlegungen darstellt.

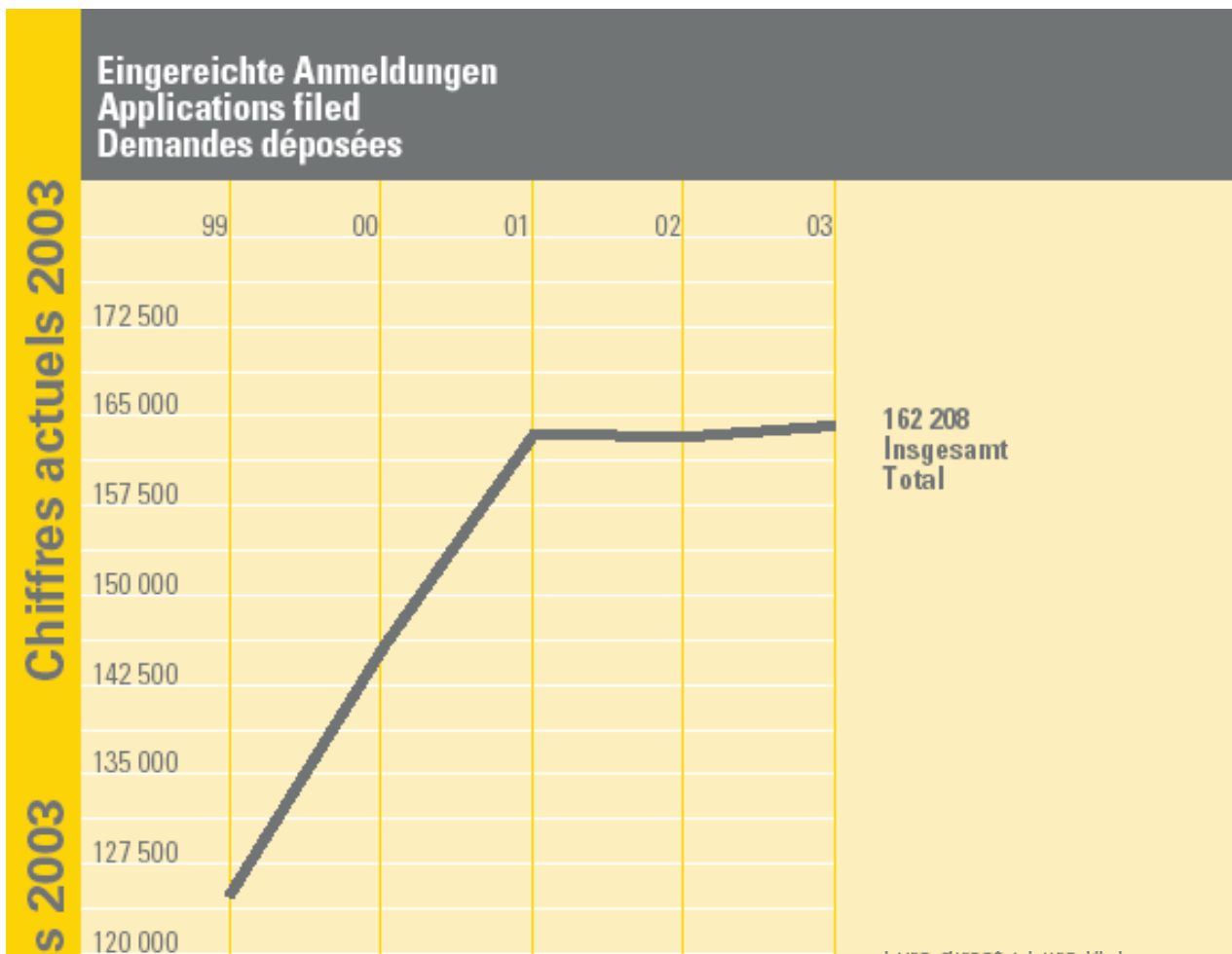


DPMA Jahresbericht 2003

1.5. Patentanmeldungen nach Bundesländern (Anmeldersitz)

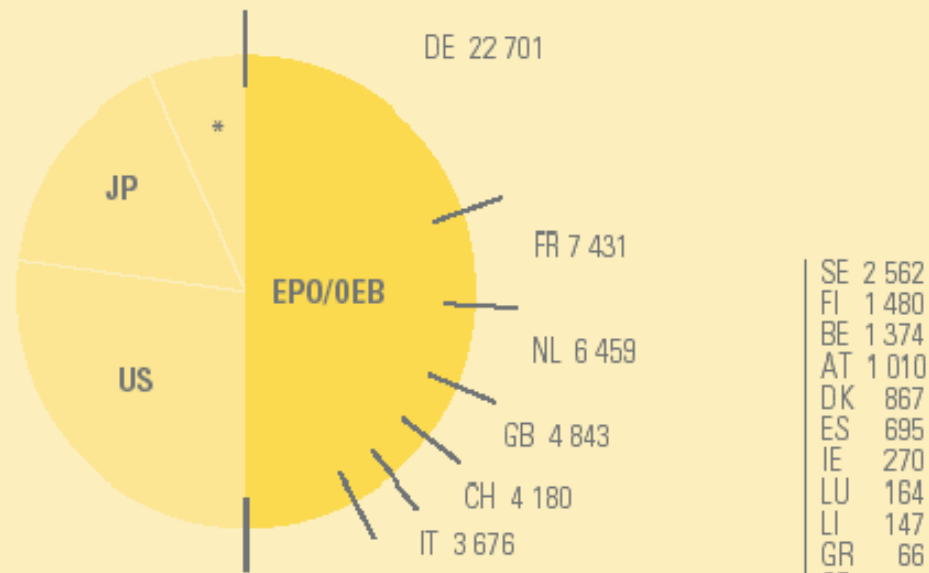
1.5 Patent applications by Federal German Länder (seat of applicant)

Bundesland / Federal German land	1997	1998	1999	2000	2001	2002	2003
Baden-Württemberg	10 156	10 879	11 728	12 486	11 884	12 822	13 888
Bayern	11 132	11 691	12 873	13 301	14 511	14 144	14 279
Berlin	1 313	1 405	1 304	1 265	1 197	1 146	1 101
Brandenburg	370	444	380	396	384	367	386
Bremen	168	170	166	166	197	150	164
Hamburg	892	893	957	1 222	1 459	1 213	998
Hessen	3 874	4 151	4 240	4 818	4 176	4 133	3 981
Mecklenburg-Vorpommern	208	215	215	212	179	190	231
Niedersachsen	2 877	2 966	3 383	3 529	3 234	2 959	2 983
Nordrhein-Westfalen	9 499	9 657	10 094	10 330	9 880	9 025	8 796
Rheinland-Pfalz	1 924	2 068	2 666	2 504	2 440	2 459	2 531
Saarland	243	289	296	363	357	340	330
Sachsen	982	1 036	1 017	1 021	902	848	824
Sachsen-Anhalt	444	415	419	466	397	361	455
Schleswig-Holstein	646	656	638	680	661	629	647
Thüringen	617	698	729	762	792	727	831
Insgesamt	45 345	47 633	51 105	53 521	52 650	51 513	52 425



EPO Fakten und Zahlen 2004 (aktuelle Zahlen 2003)

Aufschlüsselung der Anmeldungen nach Wohnsitz bzw. Sitz des Anmelders
Breakdown of applications by applicants' residence or place of business
Répartition des demandes selon le domicile ou le siège du demandeur



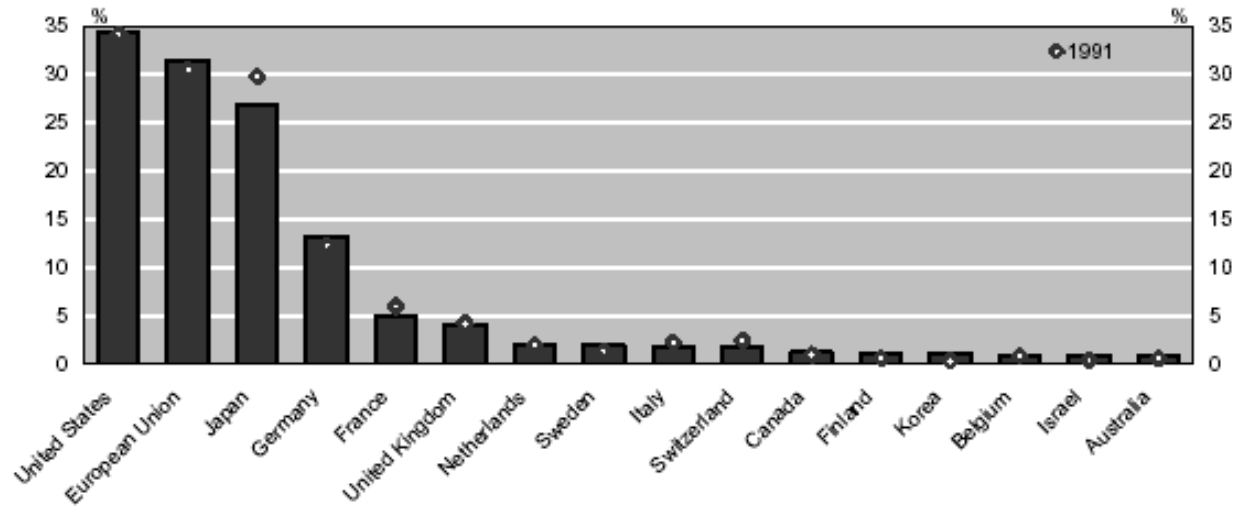
EPO/OEB	58 255 = 50.0 % (-0.3%)
US	31 863 = 27.3 % (-1.1%)
JP	18 534 = 15.9 % (+0.9%)
* Sonstige/others/autres	7 961 = 6.8 % (+0.5%)

EPO Fakten und Zahlen 2004 (aktuelle Zahlen 2003)

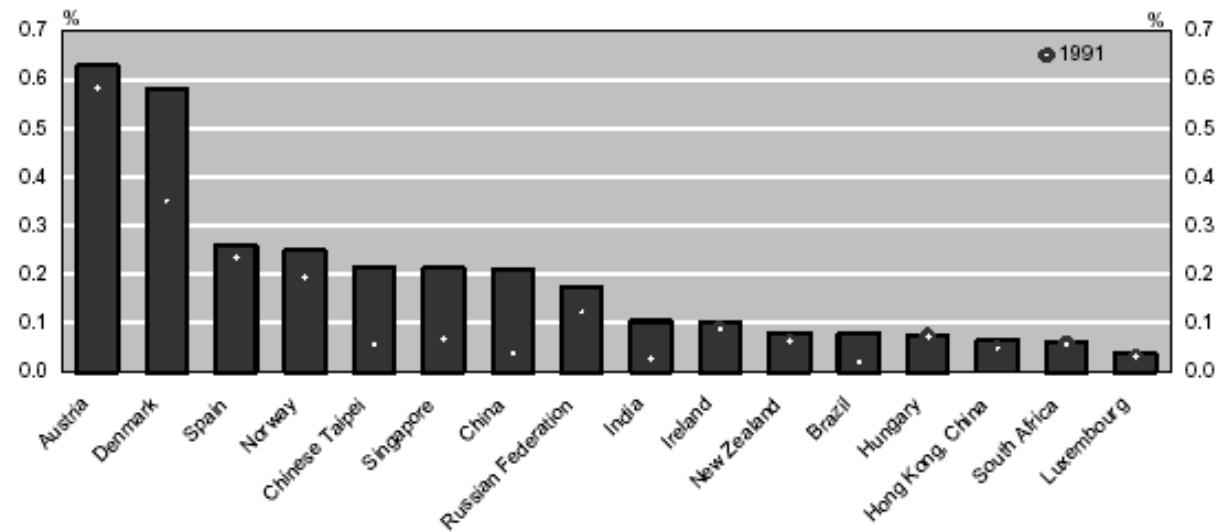
2. Share of countries in triadic patent families¹

according to the residence of the inventors, for priority year 2000

Leading patenting countries/economies (rank 1-16)



Leading patenting countries/economies (rank 17-32)



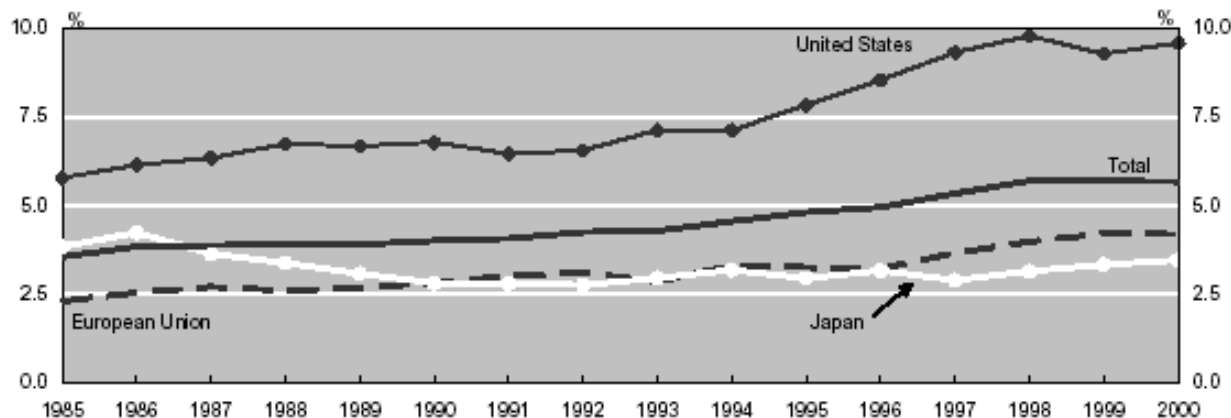
1. Patents all applied for at the EPO, USPTO and JPO. 2000 figures are estimates.

Source: OECD, Patent Database, September 2004.

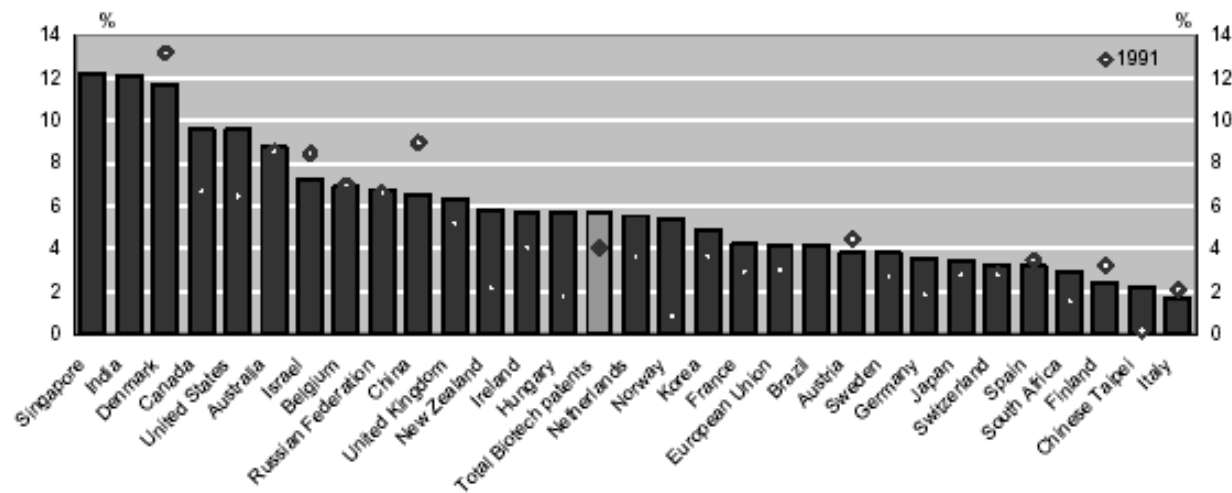
15. Biotechnology patents¹ as a percentage of the national total (EPO)

according to the residence of the inventors, by priority year

Patents in biotechnology: total and main regions



Patents in biotechnology: selected countries/economies², 2000



1. The provisional definition of biotechnology patents is presented in annex B.

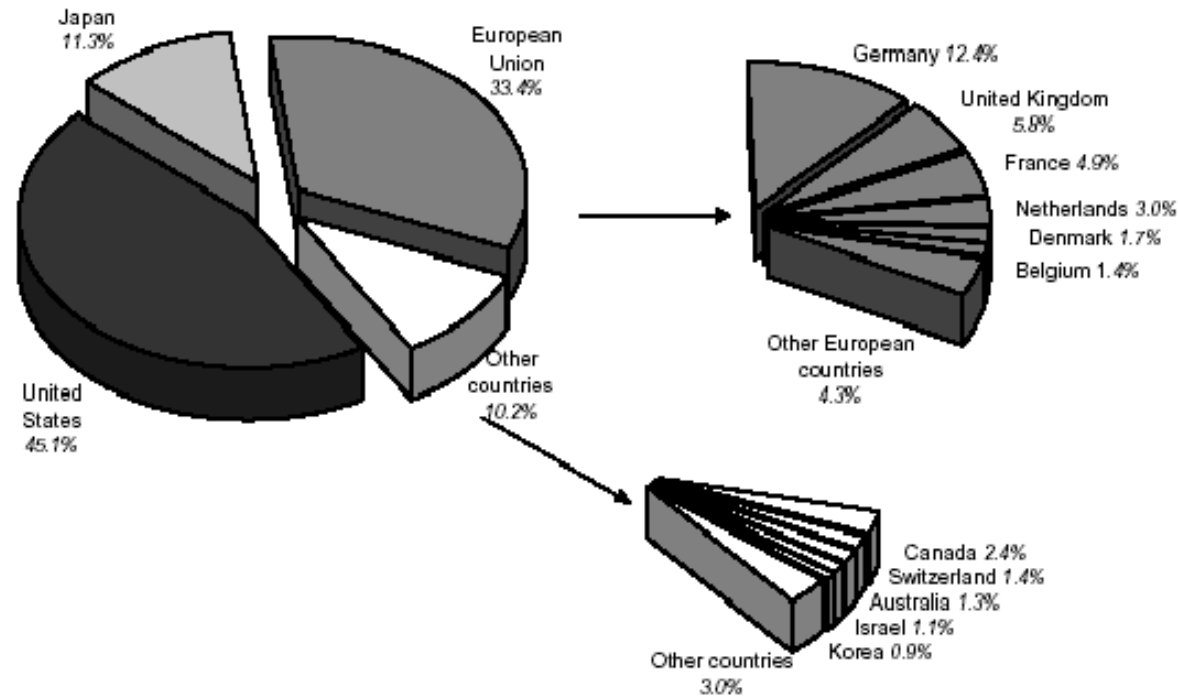
2. Cut-off point: countries/economies with more than 100 EPO applications in 2000.

Source: OECD, Patent Database, September 2004.

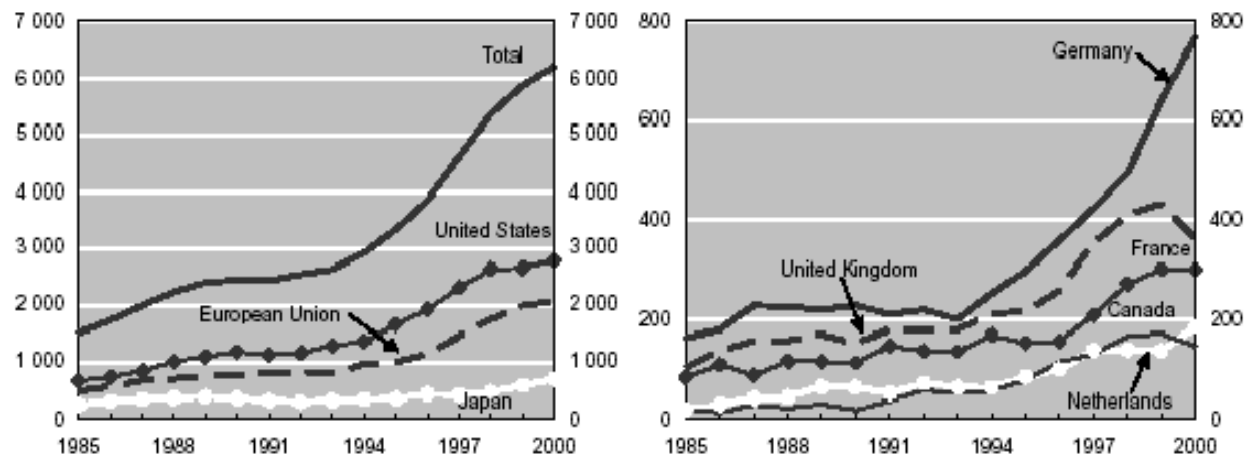
16. Biotechnology patents¹ at the EPO

according to the residence of the inventors, by priority year

Share of countries in biotechnology patents, 2000



Trends in biotechnology patents: total, main regions and selected countries



1. The provisional definition of biotechnology patents is presented in annex B.

Source: OECD, Patent Database, September 2004.